

JEREMIAS GROUP

FLUE AND CHIMNEY SYSTEMS



JEREMIAS GROUP

leading manufacturer of modular factory made chimney systems and Industrial freestanding stacks for all types of exhaust gases and ventilation applications.

Stainless steel sheet processing, specialised in mass production of small/medium sized tubular components.

**JEREMIAS FACTORY-MADE
EXHAUST SYSTEM
DW KL-50
PRESSURE-TIGHT SYSTEM FOR
BACK-UP GENERATOR SETS**



JEREMIAS DW KL-50 SYSTEM FEATURES

1-SYSTEM SPECIFICATION

2-FIELDS OF APPLICATION

3-MAIN SYSTEM FEATURES

4-TYPE OF CONNECTION & TIGHTNESS

6-FULL RANGE OF FITTINGS

7-CERTIFICATION

8-PRODUCT WARRANTY

9-GERMAN ENGINEERING

10-INTERNATIONAL SUPPORT



1-SYSTEM SPECIFICATION



1-SYSTEM SPECIFICATION



Specifications	DW KL- 50
Inner wall material	0,6mm thick AISI 304 or AISI 316 corrosion resistant stainless steel - thicker gauges available
Inner wall jointing	Factory TIG or Laser gas shield welded
Insulation	50mm thick rigid mineral wool, 120kg/m ³
Outer wall material	0,6mm thick AISI 304 or AISI 316 corrosion resistant stainless steel
Outer wall jointing	Factory TIG or Laser gas shield welded
Method of connexion between components	Male / female push joint design and secured by locking band (conical expanded female engaging system)
High Temperature Capabilities	Suitable for a continuous flue gas operating temperature of 600°C, in accordance to EN - 1856-1.
High Pressure Capabilities	Certified up to 5000Pa for positive pressure, in accordance with EN - 1856-1. - Tested to 15000 Pa (USA)
Wind load	Tested and certified



2-FIELDS OF APPLICATION



2-FIELDS OF APPLICATION



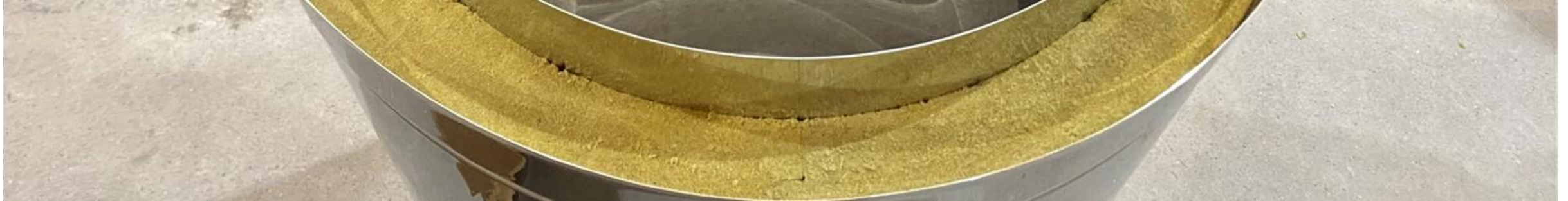
- Gas and Diesel Generator Sets
- Combined heat and power
- Emergency generators/backup power systems
- Gas turbines
- Marine engine/auxiliary systems
- Industrial boiler exhaust
- Smoke extraction systems
- Fire rated Kitchen extract ducting
- Condensing boilers
- Industrial exhausts



3-MAIN SYSTEM FEATURES



3-MAIN SYSTEM FEATURES



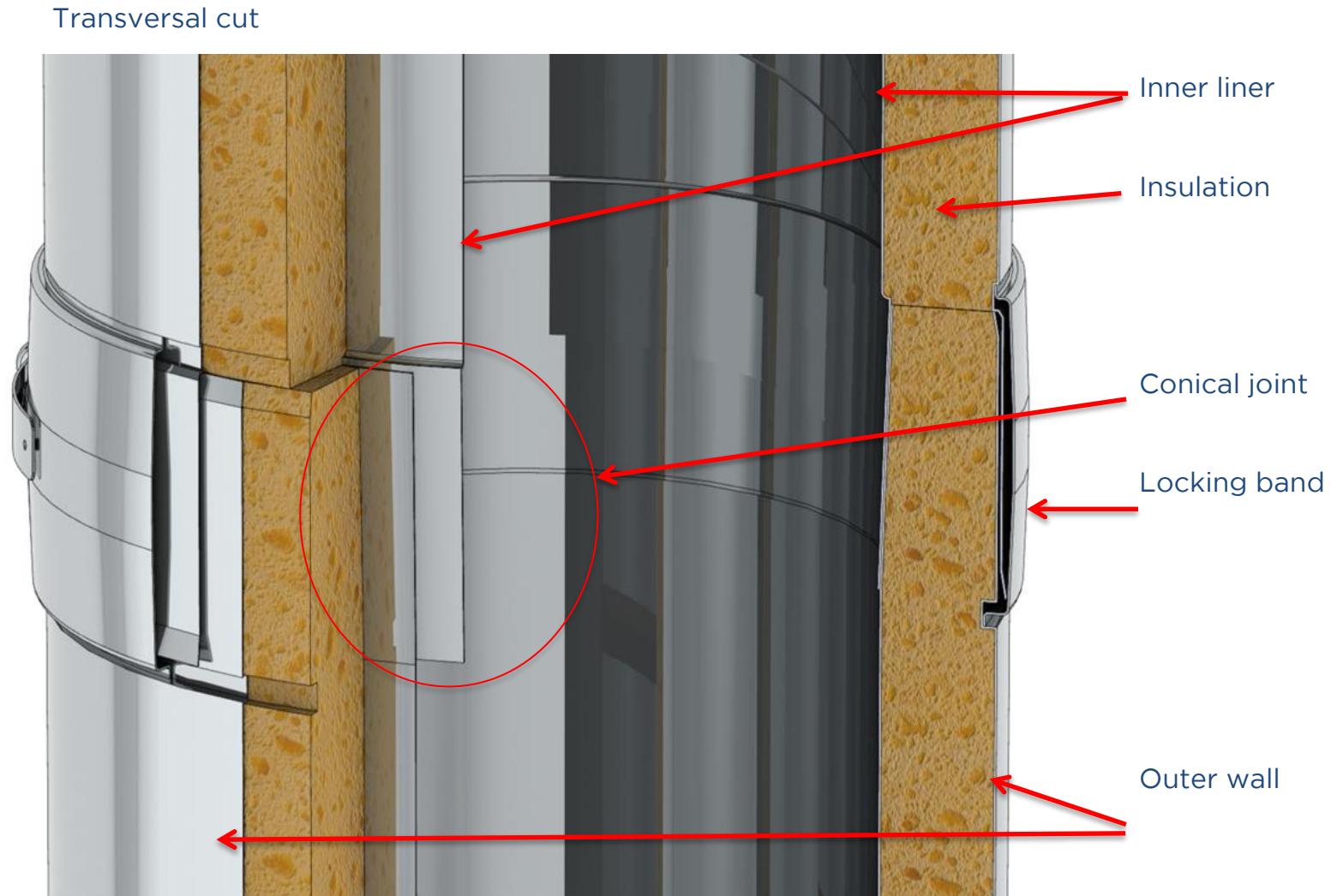
- **Corrosion resistance**
 - Austenitic corrosion resistant stainless-steel alloys
- **Welding**
 - Factory TIG or Laser gas shield welded
- **Insulation**
 - Rigid mineral wool insulation
 - Highest density in the market 120 Kg/ m³
 - No metal connections between walls = no thermal bridge
- **Connection**
 - 60 mm deep socket conical connection
 - The smoke tightness is guaranteed in the inner liner.
- **Fire resistance**
 - BS 476/20 4 hours classification for integrity = EI240
 - EN 13501-2 for integrity and insulation = EI 180 ve(o→i) T600
 - EN 13501-2 for integrity and insulation = EI 180 ho(o→i) T600



4-TYPE OF CONNECTION & TIGHTNESS

4-TYPE OF CONNECTION & TIGHTNESS

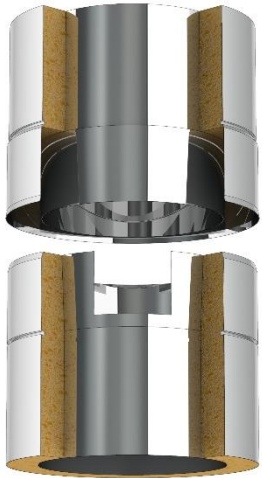
- Purposed designed and to **hold the high pressure of the exhaust gases inside the inner pipe.**
- For water tightness the outer cladding is inserted in the opposite way of the rain direction.
- **Tested guarantee of not leaks** from inside to outside or outside to inside.
- Only manufacturer in the world with the **exclusive metal to metal conical joint** technology.
- **No gaskets - no silicones**
- No metal joints between walls = **Separate free expansion of the inner and outer pipe**
- 60 mm deep socket conical connection secured by a **70mm structural locking band**



4-TYPE OF CONNECTION & TIGHTNESS

INSTALLATION

Step 1:
Positioning



Step 2:
Insertion
Internal male
External female



Step 3:
Push into
position



Step 4:
Tap to the end



Step 6:
Secure with
locking band



Job done!



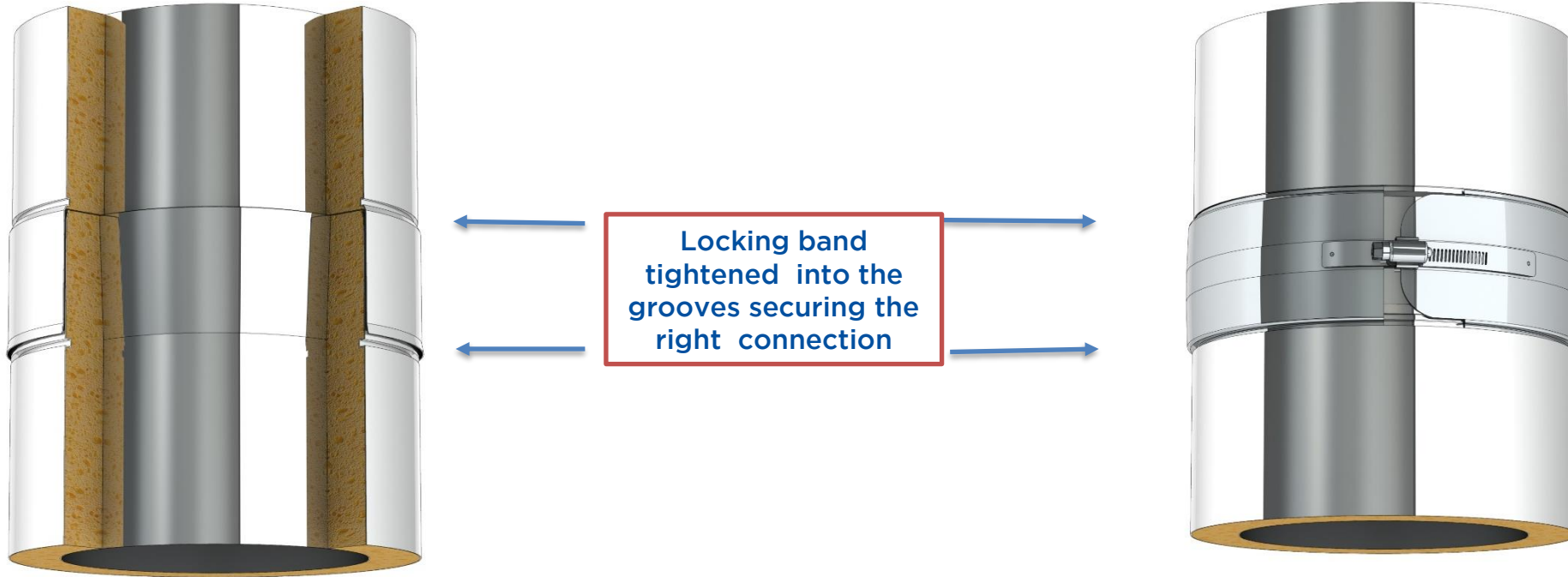
Conical metal to metal connection
-> No need of gaskets nor silicones

NO internal flanged connections
-> Quick installation

No thermal bridge + high density insulation
-> Low outer pipe temperature



4-TYPE OF CONNECTION & TIGHTNESS



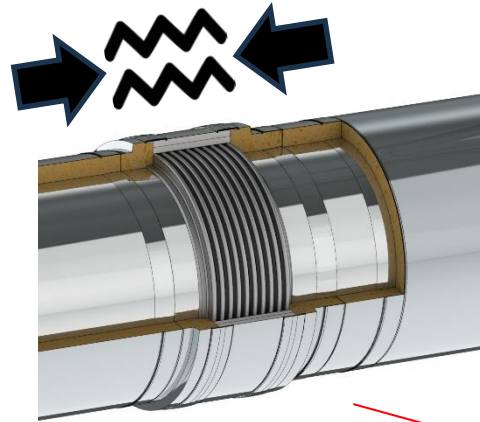
Conical metal to metal connection
-> No need of gaskets nor silicones

NO internal flanged connections
-> Quick installation

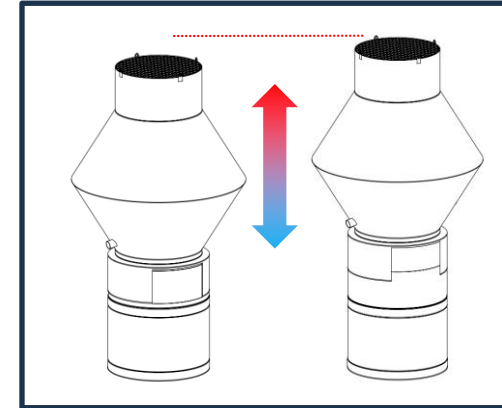
No thermal bridge + high density insulation
-> Low outer pipe temperature

4-TYPE OF CONNECTION & TIGHTNESS

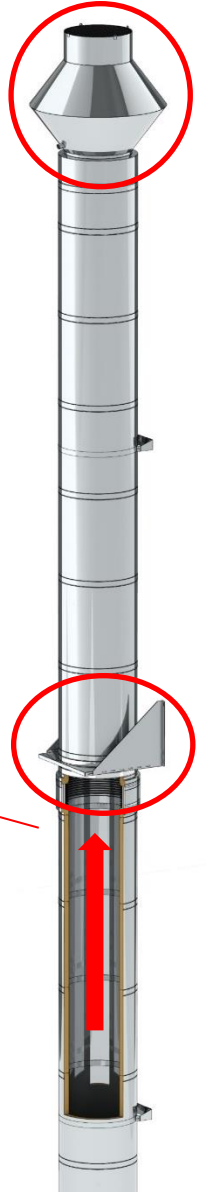
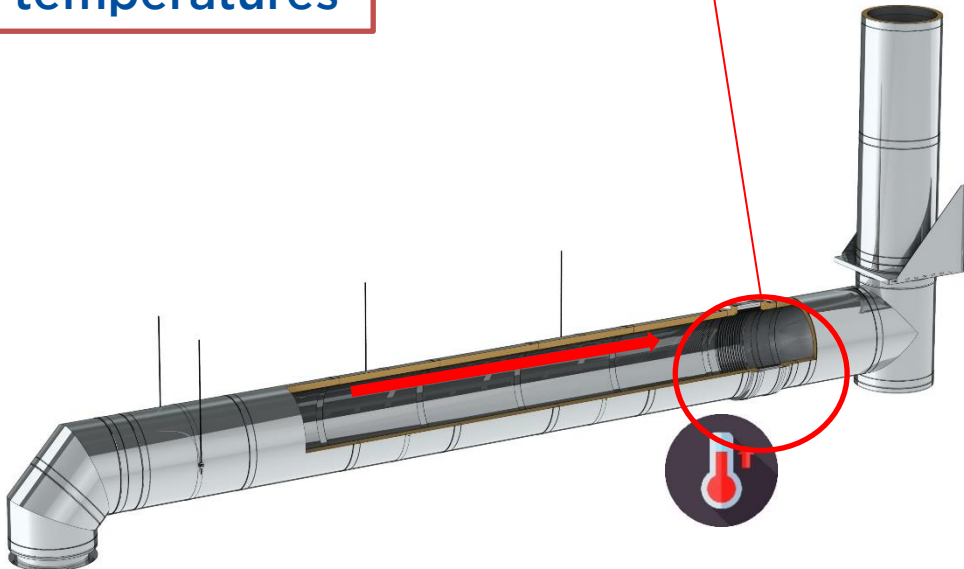
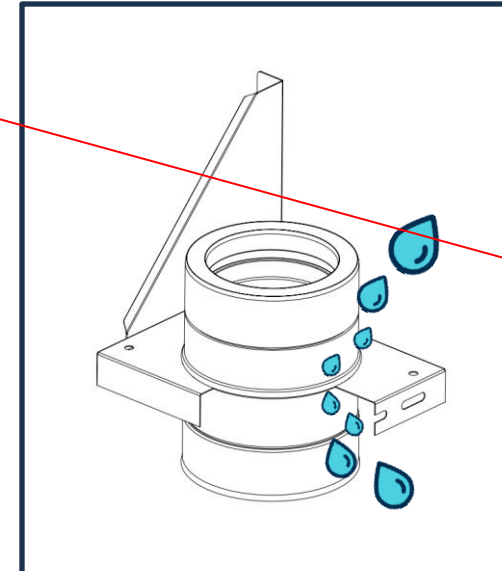
Independent movement of inner and outer pipe due to high temperatures



Expansion relief Rainhoods



Continuous stainless-steel cladding
Water-tight support plates !



6-FULL RANGE OF FITTINGS



7-FULL RANGE OF FITTINGS

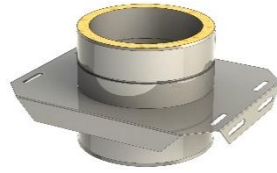
JEREMIAS HAS THE BIGGEST LIBRARY OF STANDARD FLUE AND CHIMNEY COMPONENTS IN THE WORLD



T- branches



supports



Different angle elbows



Specific adapters



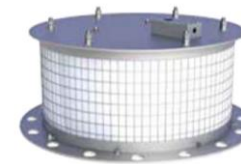
Rain hoods



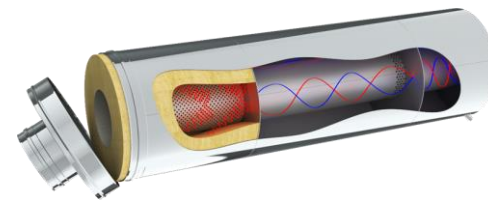
Different brackets



Pressure Relief Valves



Motorised valves



silencers



Horizontal terminals



Expansion belows

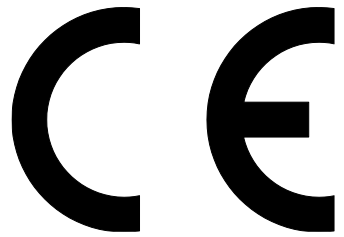


7-CERTIFICATION



6-CERTIFICATION

JEREMIAS HAS THE BIGGEST AMOUNT OF SYSTEM CERTIFICATES IN THE WORLD



8-PRODUCT WARRANTY



8-PRODUCT WARRANTY

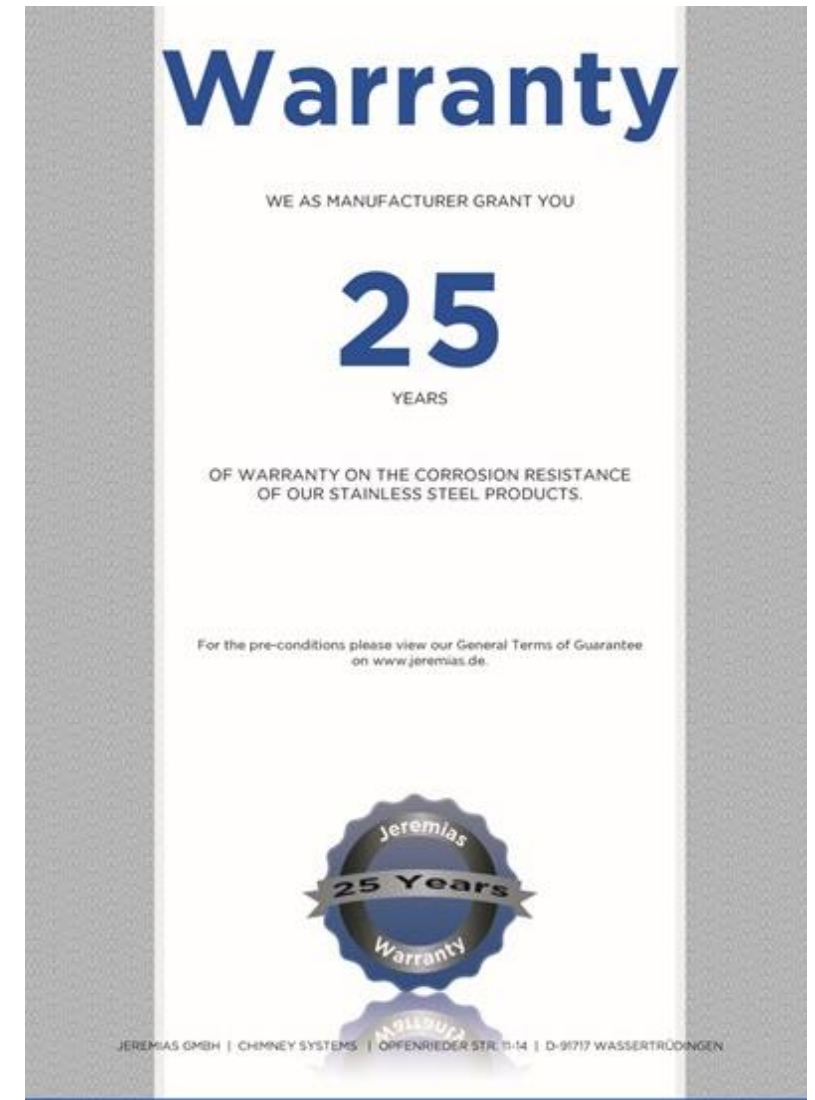
LONG LIFE GUARANTEED 25 YEARS (ACTUAL USEFUL LIFE WILL BE MUCH LONGER)

Supplied from one of the world's largest manufacturers of factory-made flues.

Manufactured to international standards under quality assurance scheme ISO 9001: 2008

Own test laboratory for thermal and static tests

Own test laboratory for acoustic R&I silencer development



9-GERMAN ENGINEERING



9-GERMAN ENGINEERING

DETAILED PROJECT PLANNING

German engineering, produced in 7 different countries

Full technical support

Design and system recommendation

Chimney sizing

Fire rating advice

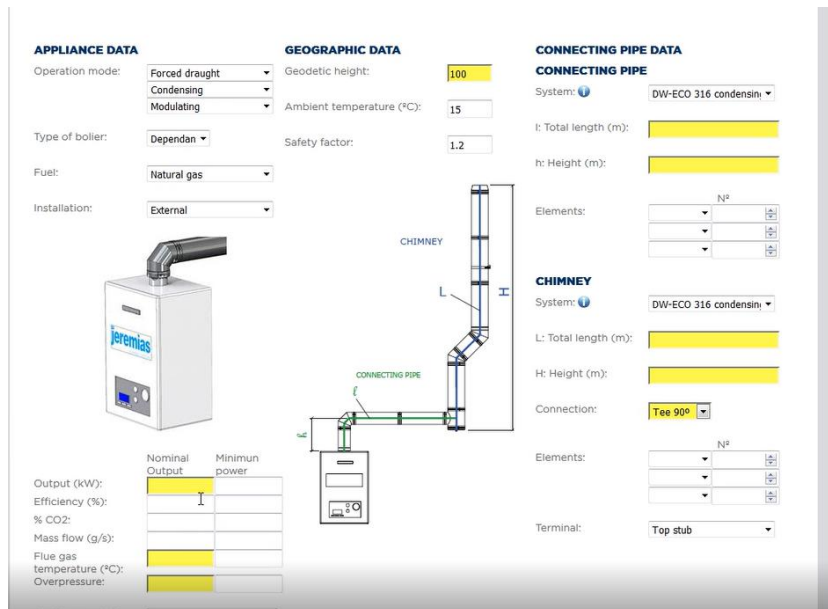
Muffler/silencer specification advise

Mechanically controlled ventilation calculation

Structural design and test-capable chimney static calculations

Supply and install service (own installers, or via accredited specialists)

After sales service in local language



Own sizing software



REVIT BIM 3D Design



Outstanding technical team



10-INTERNATIONAL SUPPORT





Sales Network in 60 countries

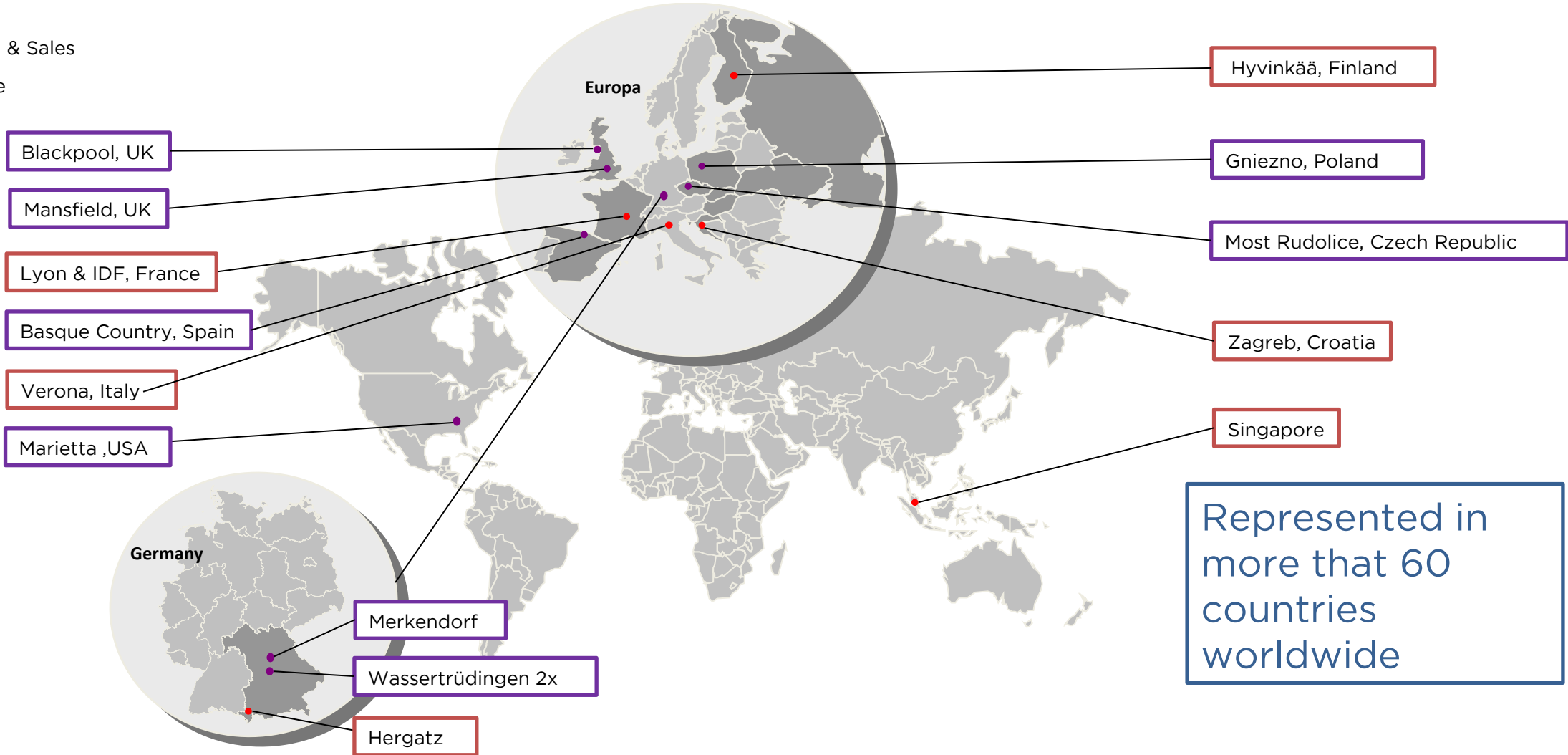
15.000 references

9 Production sites

1.850 employees

● Production & Sales

● Sales office



JEREMIAS USPs

WHAT MAKES US UNIQUE??

Wide Sales Network with presence in the main HUBS

Paris - London - Milan - Madrid - Frankfurt - Warsaw -
Vienna - Zurich - Amsterdam - Dublin - Singapore - Brazil - USA

Product range - Product specification

Three different factory-made modular solutions - piping - freestanding - masts - structures - silencers

Good technical and production capacity against supply constraints

Increased production capacity through new investments in 2023

Experienced teams - Key for good development of projects

Increasing interaction of different subsidiaries

Modular design - in House BIM

Well-trained staff



DC MILAN

ITALY



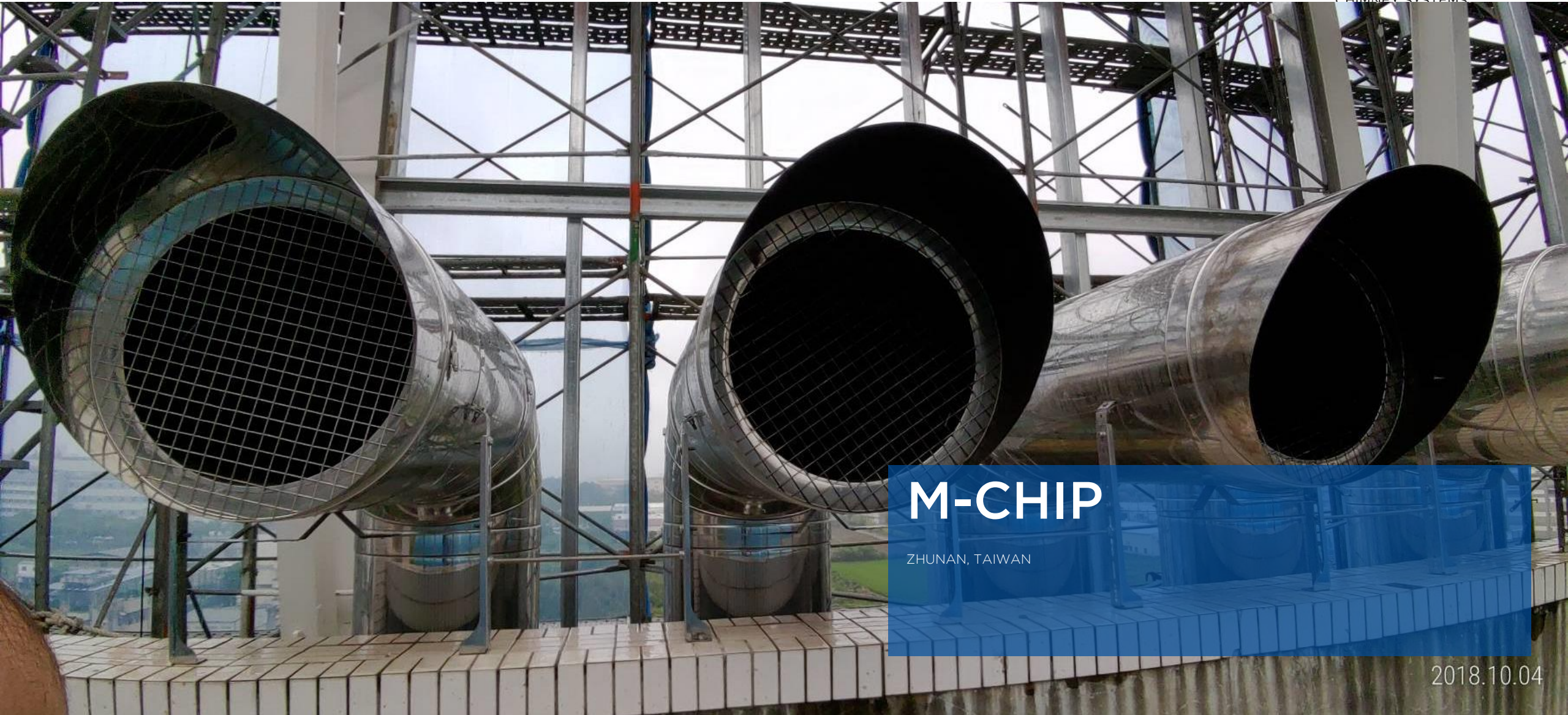
Data Centers references around the world

DC AMSTERDAM

NEDERLANDS

jeremias[®]
CHIMNEY SYSTEMS





M-CHIP
ZHUNAN, TAIWAN

2018.10.04

DATA CENTRE PCI

POLK COUNTY IOWA, USA



DATA CENTRE

SINGAPORE



DC CAMPINAS

SÃO PAULO - BRASIL



DATA CENTRE

SPAIN



**STEP AHEAD
YOUR SOLUTIONS
WITH JEREMIAS !**

A close-up photograph of two hands shaking in a firm grip. The hand on the left is wearing a blue and white checkered shirt, while the hand on the right is wearing a dark blue long-sleeved shirt. The background is a bright, out-of-focus white space.

JEREMIAS
YOUR RELIABLE PARTNER!

www.jeremias-group.com

