

JEREMIAS GROUP

FLUE AND CHIMNEY SYSTEMS



JEREMIAS GROUP

leading manufacturer of modular factory made chimney systems and Industrial freestanding stacks for all types of exhaust gases and ventilation applications.

Stainless steel sheet processing, specialised in mass production of small/medium sized tubular components.



Sales Network in 60 countries



15.000 references



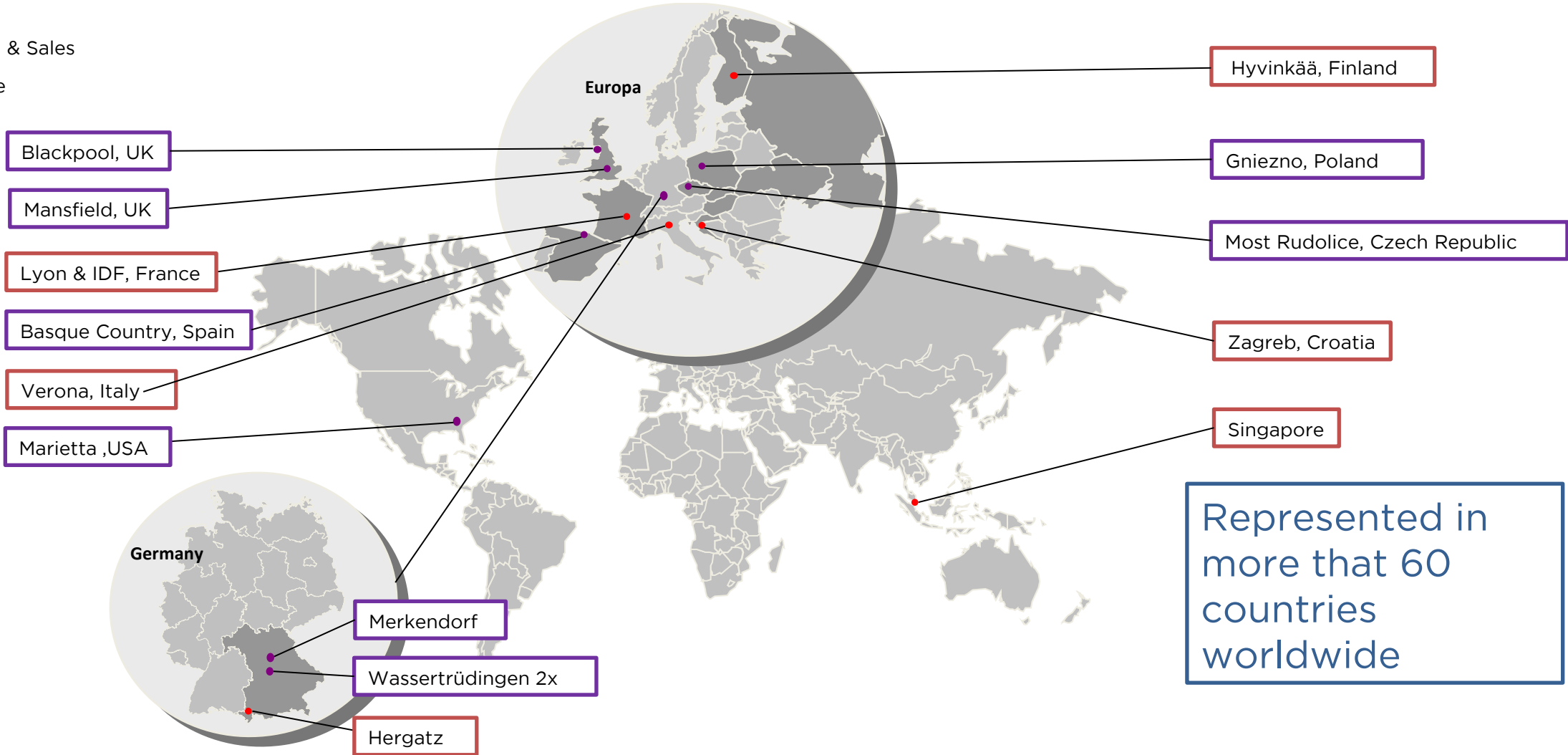
9 Production sites



1.400 employees

● Production & Sales

● Sales office



Represented in more than 60 countries worldwide



JEREMIAS GROUP 2024



Logistic Centre, Germany



Industrial stack production, Germany



Production and offices, Spain



Production site, USA



Logistic centre, Spain



Production site Poland



Production site, Germany – Factory-made Modular exhaust systems



KEY FACTS - JEREMIAS GROUP

- Family own company
- 1.400 staff members
- 9 production sites
- 11.500 ton stainless steel / steel consumption p.a.
- 150 CE certified Modular chimney systems
- Sector specific own software development
 - EasyCalc - sizing software
 - Easy Order -Quote & Order software
 - VentBOM - Design & Quote Software
 - Autodesk REVIT BIM add-in
 - B2B web shop solution
- Domestic - Commercial - Industrial



EasyCalc 6.0
Software de dimensionamiento

Jeremias VentBOM
Software de diseño de Chimeneas

BIM
Jeremias Building Information Modelling
Best support for consultants and contractors

PROGRAMA DE CÁLCULO DE CHIMENEAS EASY-CALC

Realizar el cálculo de sección de tubería para chimeneas de manera rápida y sencilla.

Modulante: [dropdown] Temperatura ambiente (°C) para el cálculo: 15
 Tipo de caldera: No estanc. Coeficiente de seguridad de flujo Se para el cálculo: 1.2
 Combustible: Gas natural
 Montaje: Exterior

Longitud total (m): [input]
 Altura (m): [input]

leer más

SOFTWARE TOOLS

FROM PROFESSIONALS TO PROFESSIONALS

EASY-CALC 6.0

instalaciones

Estufa Calderas Grupos electrógenos Cascada Colectivas Campanas profesionales

el tipo de instalación

Jeremias CHIMNEY SYSTEMS

JEREMIAS FLUE SYSTEMS
Revit Add-in

Jeremias VentBOM software interface showing a 3D model of a chimney system and a data panel on the right.

Datos de ventilación	
Material	DW-ECO 2.0 316
Diámetro mm	
Modo de longitud	
Min. Altura de conjunto	
Longitud	5175mm
Out:	
Punto de salida	
In:	
Colector en Te de 90°	
Menú rápido	
ACC EXC	
Posición	
x	y
En punto	5912 1353
Punto de fuera	5912 6528
Longitudes de ejes	0 5175





Jeremias
CHIMNEY SYSTEMS

APPLICATIONS

- GEN SET EXHAUST
- AUTOMOTIVE INDUSTRY
- DISTRICT HEATING
- HEALTHCARE
- PHARMACEUTICAL INDUSTRY
- OIL & GAS INDUSTRY
- INDUSTRIAL BAKERIES
- DOMESTIC & RESIDENTIAL HEATING
- HEATING AND SANITARY HOT WATER
- WOOD STOVES AND FIREPLACES
- COFFEE ROASTERS
- FIRE RESISTANT KITCHEN EXTRACT DUCTING
- FIRE RATED SYSTEMS EI 30 - EI 60 - EI 120 - EI 180
- COMMERCIAL VENTILATION TOWERS



GEN- SET EXHAUST

DA CENTRE - SPAIN





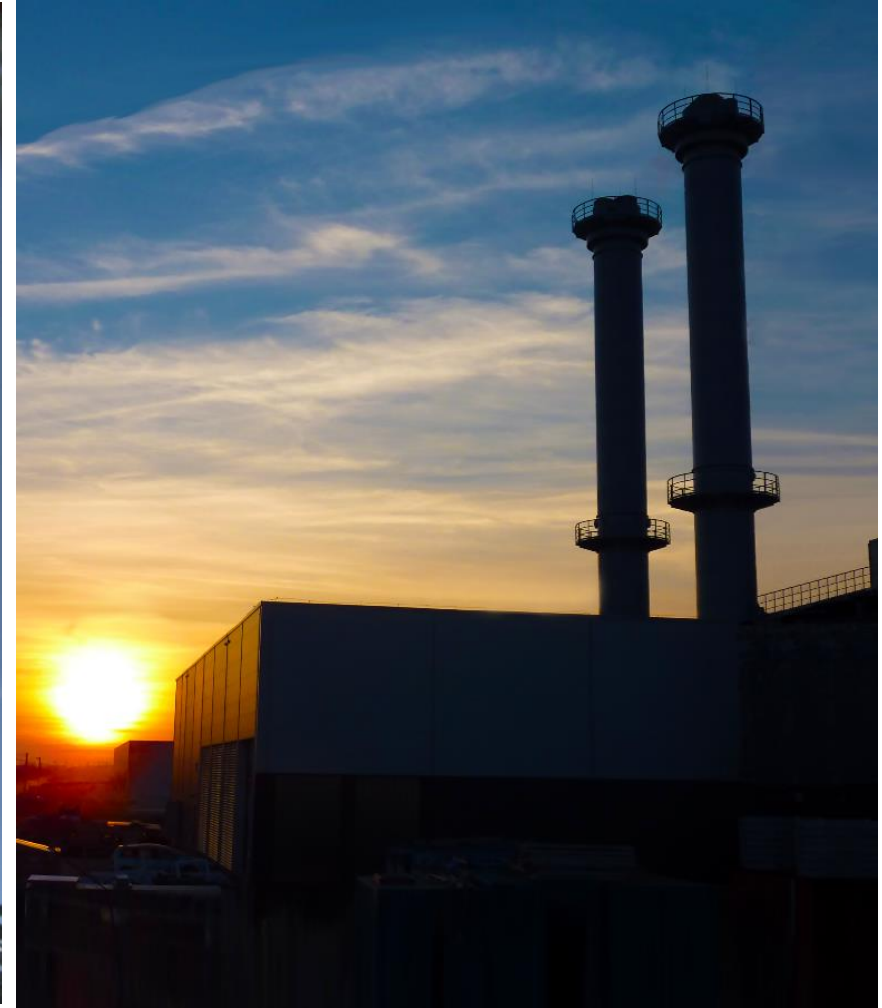
GEN-SET EXHAUST



AUTOMOTIVE INDUSTRY
INDUSTRIAL EXHAUST

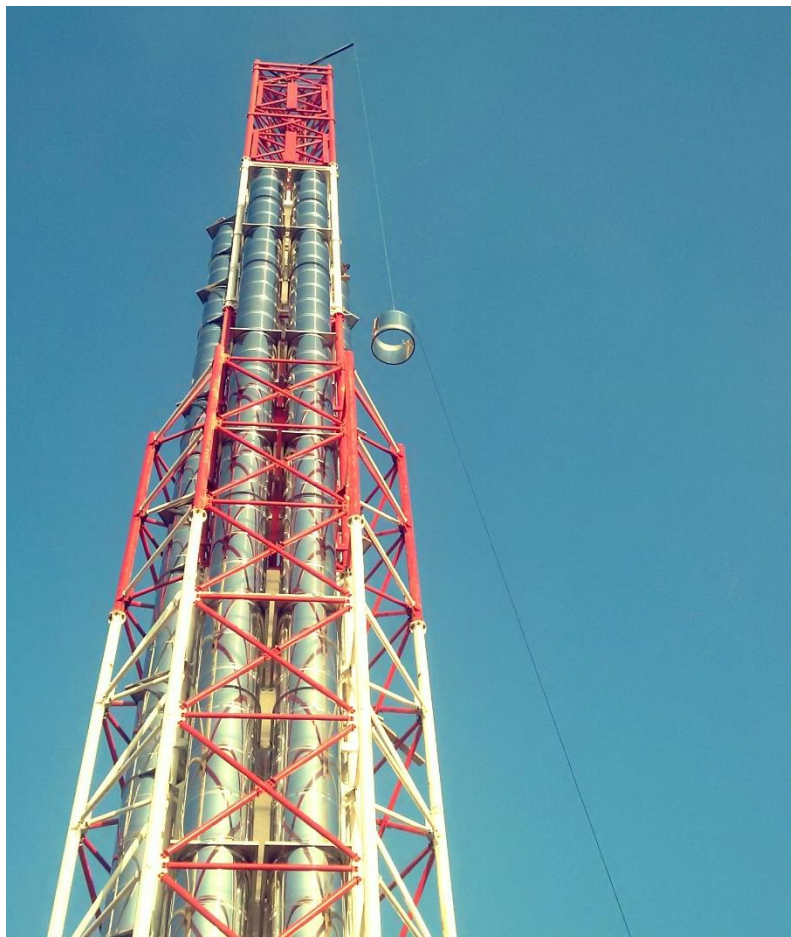
AUTOMOTIVE INDUSTRY

DAIMLER HUNGARY - KECSKEMET



DISTRIC HEATING

PUSHKINO DISTRICT HEATING, MOSCOW RUSSIA



PUBLIC BUILDINGS

HEALTHCARE

NEW AL SABAH HOSPITAL KUWAIT

 **Jeremias**[®]
CHIMNEY SYSTEMS



PHARMACEUTICAL INDUSTRY

PHARMACEUTICAL INDUSTRY

FARMACEUTICA CHIESI MONZA, LOMBARDIA - ITALY



OIL & GAS INDUSTRY

TANK HEATING - FUJAIRAH, UAE



OIL & GAS INDUSTRY

P-ENERGY PLASTIC RECYCLING PLANT, ALMERIA SPAIN



INDUSTRIAL BAKERIES

BAKERY OSKROBA KOŁBIEL, POLAND



FOOD INDUSTRY

INDUSTRIAL BAKERIES

MONBAKE GROUP, PAMPLONA, SPAIN

 **Jeremias**[®]
CHIMNEY SYSTEMS



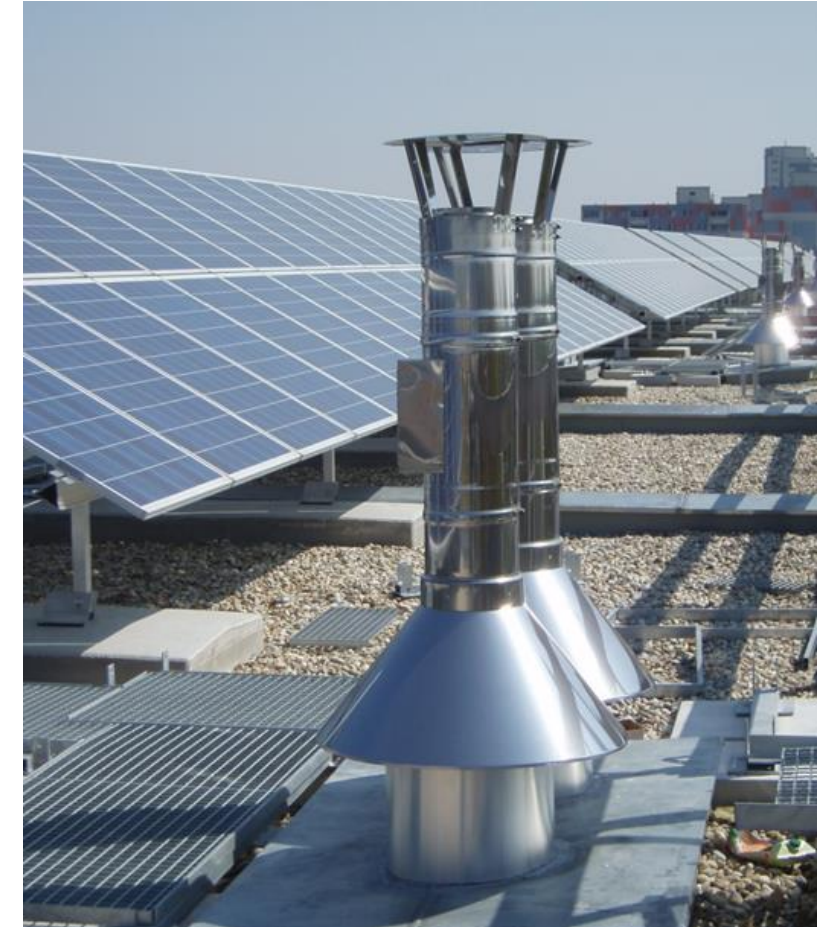
DOMESTIC & RESIDENTIAL HEATING

INDIVIDUAL HOUSE CHIMNEYS - BAVIERA, GERMANY



DOMESTIC & RESIDENTIAL HEATING

INDIVIDUAL WALL HUNG BOILER FLUE EXHAUST IN COMMON VERTICAL CHIMNEYS (COMMUNAL FLUE SYSTEMS) VIENNA AUSTRIA



COMMERCIAL HEATING & HOT WATER

COMMERCIAL BOILER EXHAUST IN COMMON HEADER - POZNAN, POLAND



LEISURE PARK

COMERCIAL HEATING & HOT WATER

OCEAN PARK HONG KONG

 **Jeremias**[®]
CHIMNEY SYSTEMS



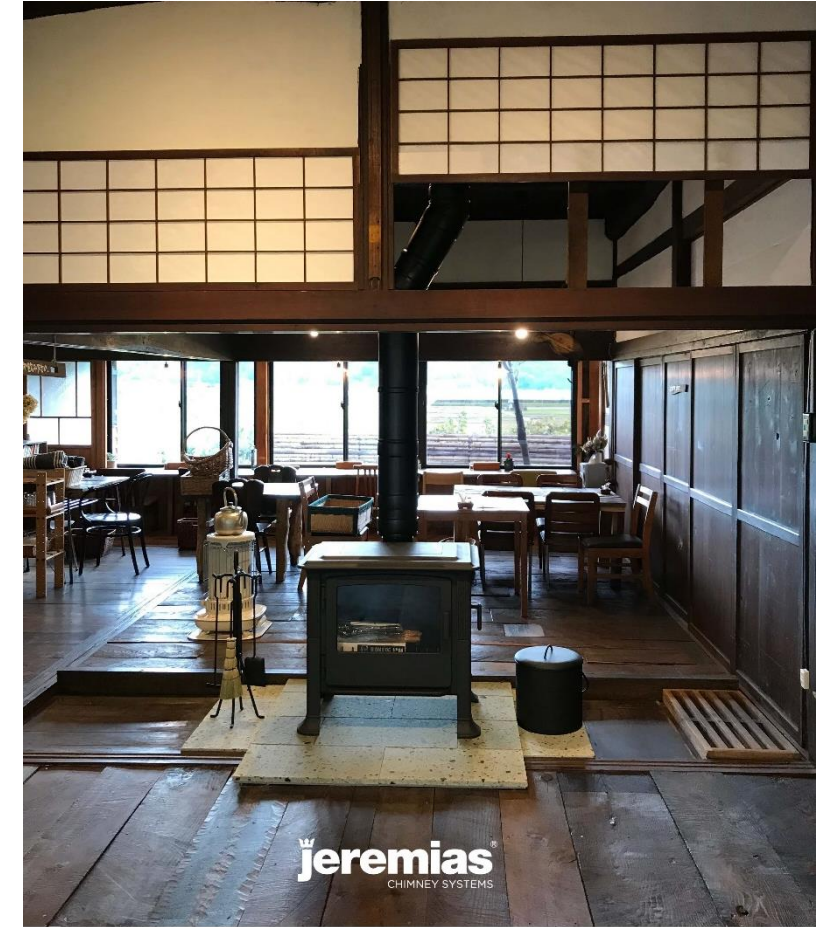
HEATING AND SANITARY HOT WATER

HOSPITAL DE BURGOS, SPAIN



DOMESTIC STOVES AND FIREPLACES

MATSUNOEDA TERRACE, - NAGANO, PERFECTURE - JAPAN



DOMESTIC STOVES AND FIREPLACES



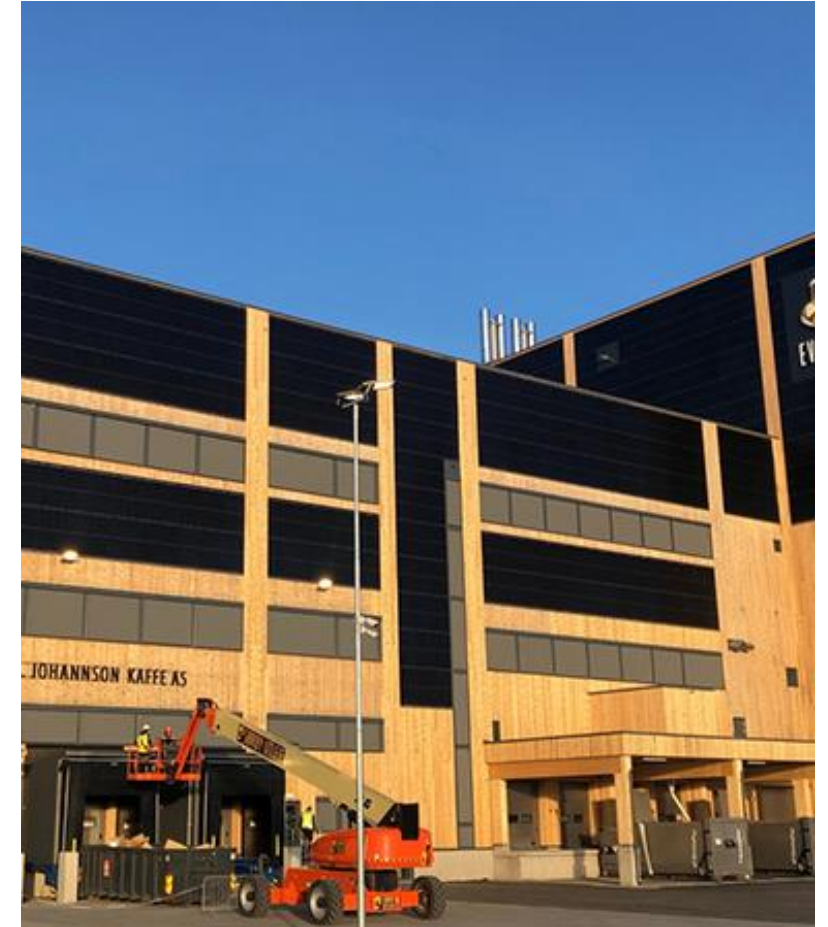
COFFEE ROASTERS

BEZIER, FRANCE



COFFEE ROASTERS

JOH. JOHANNSON KAFFE- NORWAY



FIRE RESISTANT KITCHEN EXTRACT DUCTING

CENTRO GASTRONÓMICO PLATEA, MADRID SPAIN



FIRE RESISTANT KITCHEN EXTRACT DUCTING

CONSERVAS CALVO, A CORUÑA



FIRE RATED SYSTEMS EI 30 - EI 60 - EI 120 - EI 180

SANTIAGO BERNABÉU STADIUM - MADRID, SPAIN



FIRE RATED SYSTEMS EI 30 - EI 60 - EI 120 - EI 180

WANDA METROPOLITANO, ATLETICO MADRID, MADRID



COMMERCIAL VENTILATION TOWERS

HERSLEB SKOLE, OSLO, NORWAY



COMMERCIAL VENTILATION TOWERS

NYGAARDSGATEN, FREDRIKSTAD, NORWAY



RESOURCES

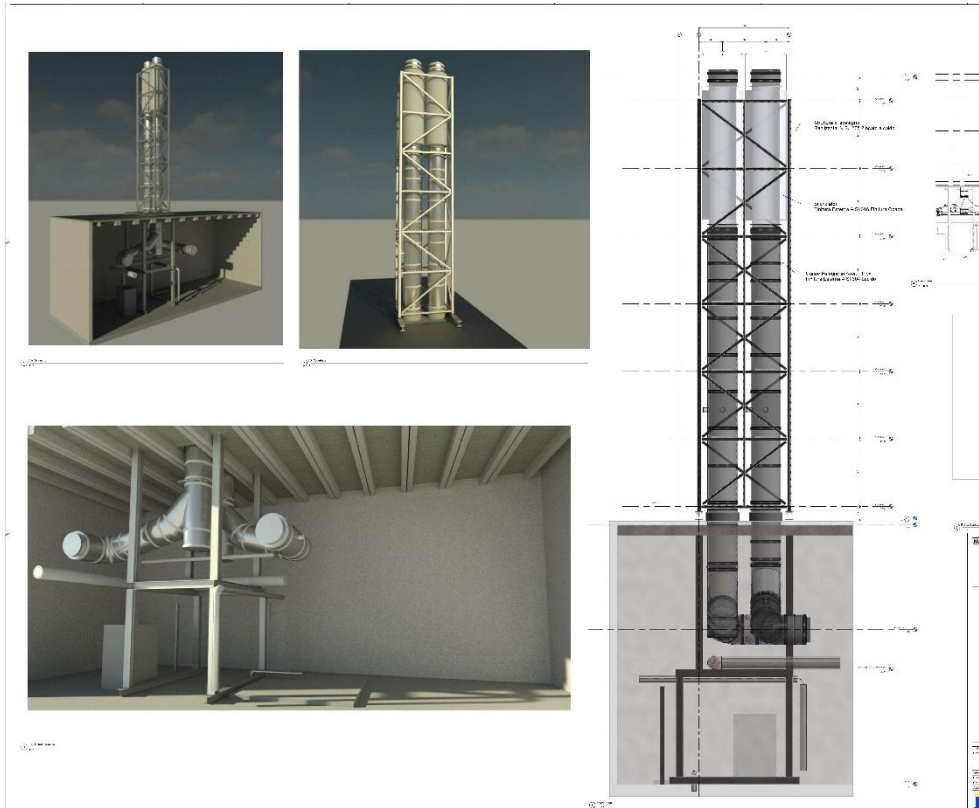
Manufacturing in 8 different locations

- Laser CNC technology.
- Combined punch and laser CNC.
- Modern 3D CAD production software.
- In house Revit BIM level 2 chimney design.
- 3D Laser cutting technology.
- Sizing software Easy-Calc 4.0.
- VentBOM estimating Package
- Automatic pipe production lines
- Robotic laser welding cells
- Mass production of small components
- More than 200.000 references in scope
- Fully automatic warehouse
- 3D component design software
- Stainless steel special alloys

SERVICES

EVERYTHING UNDER THE SAME ROOF – FROM DESIGN TO INSTALLATION

- Design, Fabrication, Supply And Installation Of Flues & Chimneys
- Condensing Commercial Boilers Flues
- Generator Exhausts
- Biomass Heating Centres
- CHP Exhaust
- Fan Dilution Systems
- Freestanding Masts
- Windshields
- Industrial Chimney Stacks
- Silencers
- Structure Design, Supply & Installation.
- Maintenance And Testing

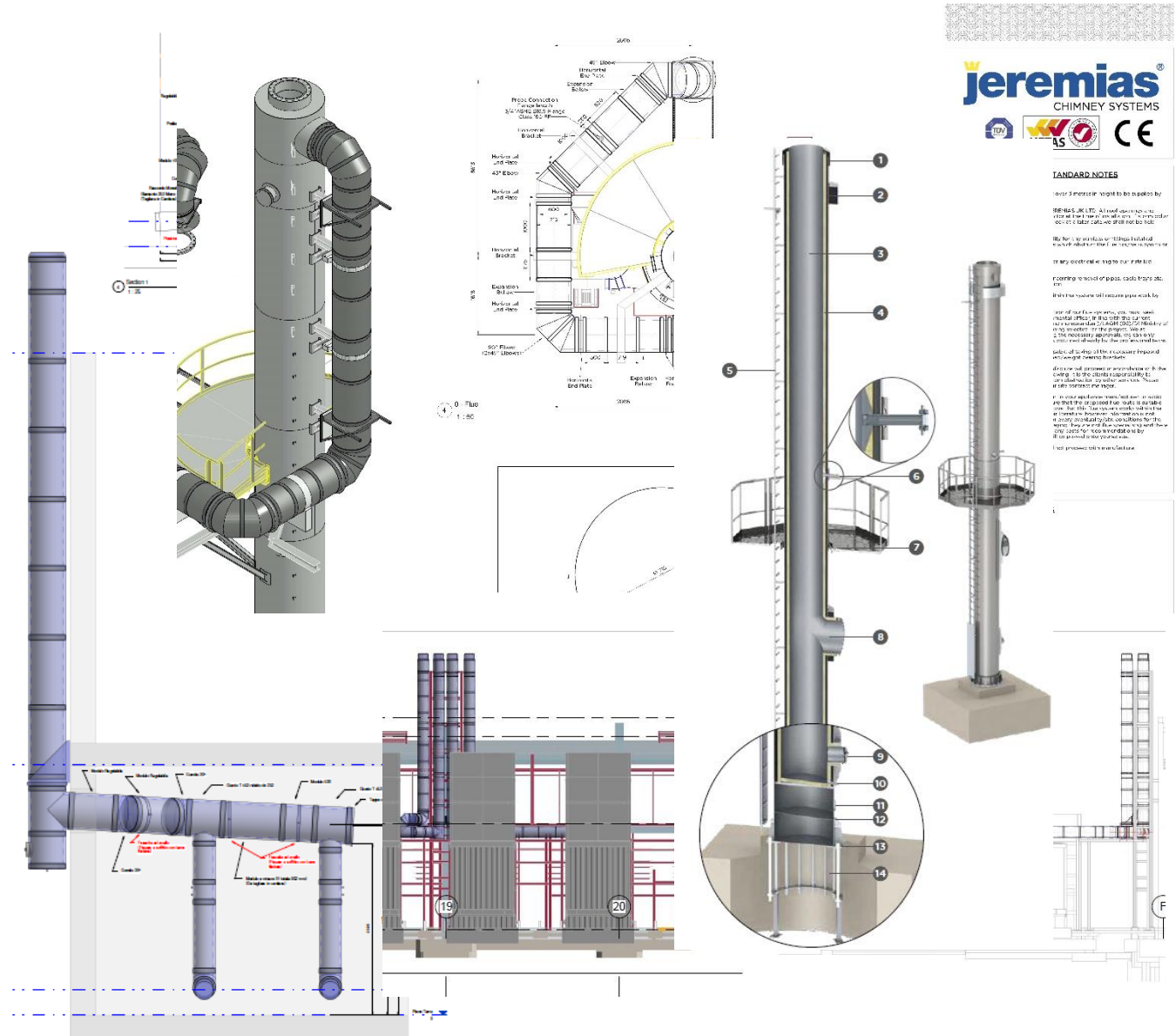


TECHNICAL SUPPORT

QUALIFIED TECHNICAL CAPACITY

- Sizing And Back Pressure Calculation
- REVIT BIM & CAD Design
- Fire Resistance Consulting
- Custom Designed Silencers
- Support For Design And Technical Development
- Static Calculations For Stacks (Self-supporting)
- Multilingual Specialist Technical Advice
- Professional Customer Service
- Manufacturer's Warranty

In Jeremias we have a highly professional team specialised in smoke and gas exhaust installations



STANDARD NOTES

1. For a more complete list of products by Jeremias, see the website: www.jeremias.com.
2. The necessary approvals, or any special requirements, or any electrical or safety requirements, according to local codes, shall be the responsibility of the customer.
3. The necessary approvals, or any special requirements, or any electrical or safety requirements, according to local codes, shall be the responsibility of the customer.
4. The necessary approvals, or any special requirements, or any electrical or safety requirements, according to local codes, shall be the responsibility of the customer.
5. The necessary approvals, or any special requirements, or any electrical or safety requirements, according to local codes, shall be the responsibility of the customer.
6. The necessary approvals, or any special requirements, or any electrical or safety requirements, according to local codes, shall be the responsibility of the customer.
7. The necessary approvals, or any special requirements, or any electrical or safety requirements, according to local codes, shall be the responsibility of the customer.
8. The necessary approvals, or any special requirements, or any electrical or safety requirements, according to local codes, shall be the responsibility of the customer.
9. The necessary approvals, or any special requirements, or any electrical or safety requirements, according to local codes, shall be the responsibility of the customer.
10. The necessary approvals, or any special requirements, or any electrical or safety requirements, according to local codes, shall be the responsibility of the customer.
11. The necessary approvals, or any special requirements, or any electrical or safety requirements, according to local codes, shall be the responsibility of the customer.
12. The necessary approvals, or any special requirements, or any electrical or safety requirements, according to local codes, shall be the responsibility of the customer.
13. The necessary approvals, or any special requirements, or any electrical or safety requirements, according to local codes, shall be the responsibility of the customer.
14. The necessary approvals, or any special requirements, or any electrical or safety requirements, according to local codes, shall be the responsibility of the customer.
15. The necessary approvals, or any special requirements, or any electrical or safety requirements, according to local codes, shall be the responsibility of the customer.



JEREMIAS GROUP TOTAL QUALITY COMMITMENT

Jeremias **leading manufacturer of Factory Made Exhaust Systems**, covering all kind of domestic, commercial and industrial applications

Jeremias product range includes **150 different CE certified systems** covering specific applications of the exhaust industry complemented by freestanding Industrial steel chimneys up to 3 meter diameter.

Besides this compulsory CE Certification, Jeremias has also **special certifications and listings** needed in specific countries under i.e.; BS, Hetas, Swiss, Russian or US standards.

For further information, **Jeremias can supply technical guidance on various standards** including the latest version of the European Standard 1856-1/2:2010. Please contact our certification department.

www.jeremias-group.com



Warranty

WE AS MANUFACTURER GRANT YOU

25
YEARS

OF WARRANTY ON THE CORROSION RESISTANCE
OF OUR STAINLESS STEEL PRODUCTS.

For the pre-conditions please view our General Terms of Guarantee
on www.jeremias.de.

**Jeremias
25 Years
Warranty**

JEREMIAS GMBH | CHIMNEY SYSTEMS | OFFENRIEDER STR. 11-14 | D-91717 WASSERTRÜDINGEN





**JEREMIAS GROUP
YOUR RELIABLE PARTNER!**

www.jeremias-group.com