

AERO-PROTECT

Airtight sealing solutions for exhaust systems

YOUR PARTNER JEREMIAS

The Jeremias Group, headquartered in Wassertrüdingen (Bavaria), is one of the world's leading manufacturers of flue systems and chimney systems in all areas of heat and power generation for industrial and residential applications.

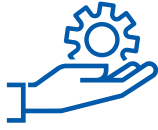
Strong, open and international - that's how we have been presenting ourselves for almost 50 years. Worldwide production sites and sales offices represent entrepreneurial success, ambitious visions and healthy growth.

With innovative products, outstanding service and highly qualified employees, we want to inspire our customers every day and achieve the goal of sustainable joint success.

Currently, our product range includes more than 100 different CE-certified systems for private and commercial applications as well as free-standing steel chimneys with a diameter of up to four meters.

This product overview provides you with a comprehensive overview of characteristics, application and installation of Airtight sealing solutions for exhaust systems.





SERVICE

- Flexible production
- Special solutions tailored to customer needs
- Planning support and designing advice
- Chimney calculation
- Chimney sizing
- Country specific approvals
- Professional customer service
- Free software solutions



QUALITY

- More than 100 CE-certified systems
- CNC laser cutting and stamping technology
- Special stainless steel alloys
- Condensate/gas tight, polished welding seams
- 25-year guarantee
- ISO 9001 certified



INNOVATION

- The largest range of products in the market
- System development with boiler, CHP and stove manufacturers
- In-house development of manufacturing machines
- In-house test facility for stainless steel chimney systems and silencers
- Computer-based simulations





HotSchott DW-AIRTIGHT SEALING COLLARS

HotSchott airtight sealing collars for double-walled stainless steel chimneys consists of a flexible rubber grommet with a long sealing joint that enables a large contact surface to the pipe ensuring a secure seal providing desired air tightness.

This also helps to fulfil the requirements for „blower-door“ tests of buildings. The sealing collars are tested by TÜV-Süd and meet the normative requirements for soot-resistant, double wall Jeremias exhaust systems.

CHARACTERISTICS:

- Suitable for double wall exhaust systems with an insulation thickness of 25 mm and 32 mm in negative pressure
- Working temperature: from 4 °C
- Temperature resistance at the grommet: -20 °C to + 250 °C
- Suitable for external diameters from Ø 180 to 270 mm
- Type 1: suitable for roof pitch up to 30 °
- Type 2: suitable for roof pitch up to 45 °
- Adhesive collar made of Tyvek material
- Suitable and tested for: T400 N1 G



Step 1



Step 2



Step 3



Step 4



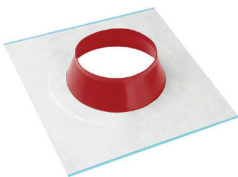
Step 5



Step 6

TYPE 1:

Airtight sealing collars 7°-35° for chimneys (up to T 400)

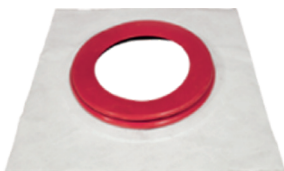


ZUTE2195Ø

| Ø | DW-FU / DW-ECO 2.0 DW-VISION | DW-MAMMUT | ADHESIVE COLLAR |
|---------|---------------------------------|-----------|-----------------|
| 180-195 | x | | 400x400mm |
| 200-225 | x | x | 400x400mm |
| 230-245 | x | x | 580x580mm |
| 250-270 | x | x | 580x580mm |

TYPE 2:

Airtight sealing collars 30°-45° for chimneys (up to T 400)



ZUTE2196Ø

| Ø | DW-FU / DW-ECO 2.0 DW-VISION | DW-MAUT | ADHESIVE COLLAR |
|---------|---------------------------------|---------|-----------------|
| 200-225 | x | x | 400x400 |
| 230-245 | x | x | 580x580 |
| 250-270 | x | x | 580x580 |



DW-Airtight CEILING PLATE



Ceiling plate 0 - 55 ° with vapour barrier seal (T450 / N1).

The ceiling plate with vapour barrier seal is a finished component, which closes the feed-through opening ensuring air and vapour tightness. This also helps to fulfil the requirements for „blower-door“ tests of buildings.

The tested ceiling plates meet the normative requirements for soot-resistant, double wall Jeremias exhaust systems.

EIGENSCHAFTEN

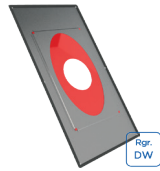
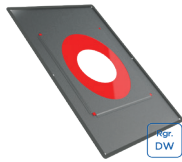
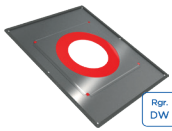
- Suitable for double wall exhaust systems with an insulation thickness of 25 mm and 32 mm in negative pressure
- Finished component, no retrofitting required
- Approved and tested for T450 N1 G

FOR SYSTEM DW-FU

Ceiling plate
0 - 20 ° with vapour
barrier seal (up to
450°C / N1)

Ceiling plate
21 - 40 ° with vapour
barrier seal (up to
450°C / N1)

Ceiling plate
41 - 55 ° with vapour
barrier seal (up to
450°C / N1)



DW1702Ø

DW1703Ø

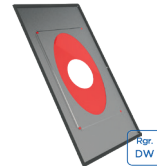
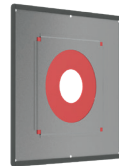
DW1704Ø

FOR SYSTEM DW-ECO 2.0

Ceiling plate
0 - 20 ° with vapour
barrier seal (up to
T450 / N1)

Ceiling plate
21 - 40 ° with vapour
barrier seal (up to
T450 / N1)

Ceiling plate
41 - 55 ° with vapour
barrier seal (up to
T450 / N1)



DWECO1702Ø

DWECO1703Ø

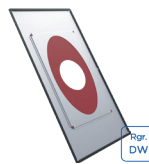
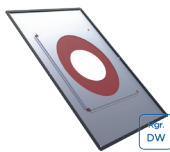
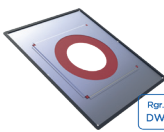
DWECO1704Ø

FOR SYSTEM DW-VISION

Ceiling plate
0 - 20 ° with vapour
barrier seal (up to
T450 / N1)

Ceiling plate
21 - 40 ° with vapour
barrier seal (up to
T450 / N1)

Ceiling plate
41 - 55 ° with vapour
barrier seal (up to
T450 / N1)



DW1702Ø

DW1703Ø

DW1704Ø



Airtight sealing collars for TWIN-PL/-P AND EW-PPS

TYPE 1:

Fleece butyl pipe sealing collar for exhaust pipes & ventilation pipes up to 45 ° (can be plastered over)

Airtight sealing collar for fast and permanent sealing of the feed-through openings from vapour barriers, roofing membrane, wood-based plates, etc. The sealing collar is provided with a tear-resistant, can be plastered over, fleece-butyl adhesive collar, offers an extremely strong adhesive power.

CHARACTERISTICS:

- Suitable for TWIN-P and PP exhaust systems
- Working temperature: 5 °C to 30 °C
- Temperature resistance at the grommet: -40 °C to 120 °C
- Suitable for outer diameters from Ø 100 to 270 mm
- Suitable for roof pitches up to 45 °
- Can be plastered over adhesive collar made of Fleece butyl
- Approved and tested for: T120-H1-W



Step 1



Step 4



Step 2



Step 5

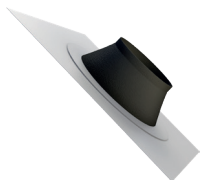


Step 3



Step 6

Airtight sealing collars 7°-35° for connection line up to T 200 (can be plastered)



ZUTE21970

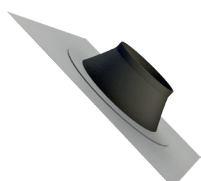
| Ø | EW-PPS / TWIN-PL / TWIN-P | ADHESIVE COLLAR |
|-----------|---------------------------|-----------------|
| 100-110mm | x | 320x320mm |
| 125-135mm | x | 320x320mm |
| 150-165mm | x | 350x350mm |
| 200-220mm | x | 400x400mm |
| 250-270mm | x | 580x580mm |

TYPE 2:

Tyvek - vapour seal collar for exhaust pipes up to 45 ° (cannot be plastered)

In addition, we also offer an economical sealing collar with Tyvek adhesive collar, which is only suitable for vapour barriers in the interior.

Airtight sealing collars 7°-35° for chimneys up to T 200 (cannot be plastered)



ZUTE21960

CHARACTERISTICS:

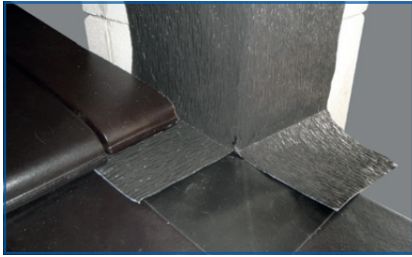
- Working temperature: from - 5 °C
- Temperature resistance at the grommet: -30 °C to 130 °C
- Suitable for outer diameters from Ø 100 to 135 mm
- Suitable for roof pitches up to 45 °
- Adhesive collar made of Tyvek
- Suitable only for interior
- Suitable and tested for: T120-H1-W

| Ø | EW-PPS / TWIN-PL / TWIN-P | ADHESIVE COLLAR |
|-----------|---------------------------|-----------------|
| 100-110mm | x | 320x320mm |
| 125-135mm | x | 320x320mm |



With our shaft sealing collars, chimneys and shafts under and over the roof can be air tight permanently and hence flexible. Thanks to flexible materials, the sealing system adapts perfectly to irregularities such as roof tiles and is easy to install.

ON / ABOVE ROOF



Weather resistant outer corners

UNDER CHIMNEY CASING



Inner corners plastering not possible

INSIDE AREA



Inner corner can be plastered over

ABOVE THE ROOF

External sealing Set
Width: 250 mm

Connection band
Width: 450 mm
Length: 2500 mm

Connection band
Width: 450 mm
Length: 5000 mm



| | ZUTE2200- | ZUTE2200- | ZUTE2200- |
|-------------------|------------|------------|------------|
| Brown | ZUTE2200-1 | ZUTE2200-4 | ZUTE2200-7 |
| Terrakotta | ZUTE2200-2 | ZUTE2200-5 | ZUTE2200-8 |
| Black | ZUTE2200-3 | ZUTE2200-6 | ZUTE2200-9 |

Primer



| | ZUTE2202- |
|---------------|--------------|
| 125 ml | ZUTE2202-125 |
| 250 ml | ZUTE2202-250 |
| 500 ml | ZUTE2202-500 |

The primer is required for absorbent substrates to create a bonding bridge between the seal and the substrate.

BELOW THE ROOF, CAN BE PLASTERED

Shaft sealing below the roof, can be plastered
Length: 500 mm
Set1

Shaft sealing below the roof, can be plastered
Length: 750 mm
Set2

Shaft sealing below the roof, can be plastered
Length: 1000 mm
Set3

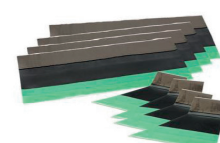
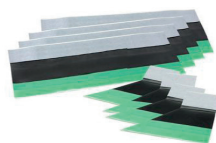
ABOVE / BELOW THE ROOF, CAN'T BE PLASTERED

Shaft sealing above and below the roof cannot be plastered for water containing section
Length: 500 mm
Set1

Shaft sealing above and below the roof cannot be plastered for water containing section
Length: 750 mm
Set2

Shaft sealing above and below the roof cannot be plastered for water containing section
Length: 1000 mm
Set3

Shaft dimension outer in mm



| | ZUTE2201-1 | ZUTE2201-3 | ZUTE2201-5 | ZUTE2201-2 | ZUTE2201-4 | ZUTE2201-6 |
|----------------|------------|------------|------------|------------|------------|------------|
| 300x300 | | | | | | |
| 550x550 | | | | | | |
| 800x800 | | | | | | |

GERMANY

Jeremias Abgastechnik GmbH
Opfenrieder Str. 12
D-91717 Wassertrüdingen
Phone: +49 9832 6868-50
Mail: welcome@jeremias-group.com
www.jeremias-group.com

POLAND

www.jeremias.pl

USA

www.jeremiasinc.com

SPAIN

www.jeremias.com.es

RUSSIA

www.jeremias.ru

SWITZERLAND

www.jeremias-schweiz.ch

CZECH REPUBLIC

www.jeremias.cz

CROATIA

www.jeremias.hr

FRANCE

www.jeremias-france.fr

ITALY

www.jeremias.it

FINLAND

www.jeremias.fi

UNITED KINGDOM

www.jeremias.uk

Austria | Belarus | Belgium | Brazil | Bulgaria | China (Hongkong) | Denmark | Estonia | Greece | Hungary | Ireland | Kazakhstan | Latvia | Liechtenstein | Lithuania | Luxembourg | Malta | Mexico | Moldova | Netherlands | Norway | Portugal | Romania | Saudi Arabia | Serbia | Singapore | Slovakia | Slovenia | South Africa | Sweden | Tunisia | Ukraine | United Arab Emirates

Jeremias high quality products to be installed only by selected experts.

The expert in your area: